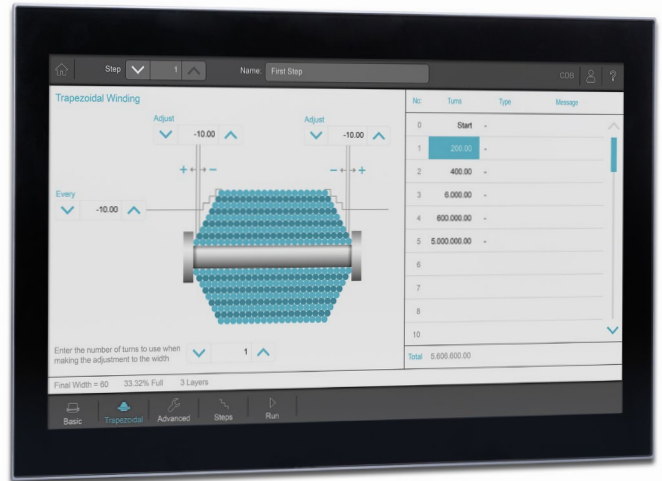


JI-FPC2022 Flat Panel PC

Short description

The JI-FPC2022 flat panel PC is an industrial PC with a widescreen display and a projected capacitive touch screen (PCAP). The screen size of 21.5" offers sufficient room for operator guidance even of large plants. With a MultiCore CPU of the i5® class, the operating device is able to process several applications simultaneously and with high performance. Thanks to the large number of available interfaces, the device can be optimally adapted to individual requirements. The real glass surface is scratch-resistant and dirt-repellent.



Features

- Glass front
- Widescreen (16:9)
- Multitouch
- PCAP
- Windows10 IoT
- JetViewSoft visualization
- Intel® Core™ i5 processor
- 2x GB Ethernet
- 4x USB 3.0
- SD card
- SSD
- 1x HDMI
- 1x Displayport for additional monitor
- Fanless

Options

- 16 GB RAM
- WiFi (WLAN)
- RFID reader
- 2x COM RS-232, 422, 485 interface
- CF/SD card adapter

JI-FPC2022

Technical Data

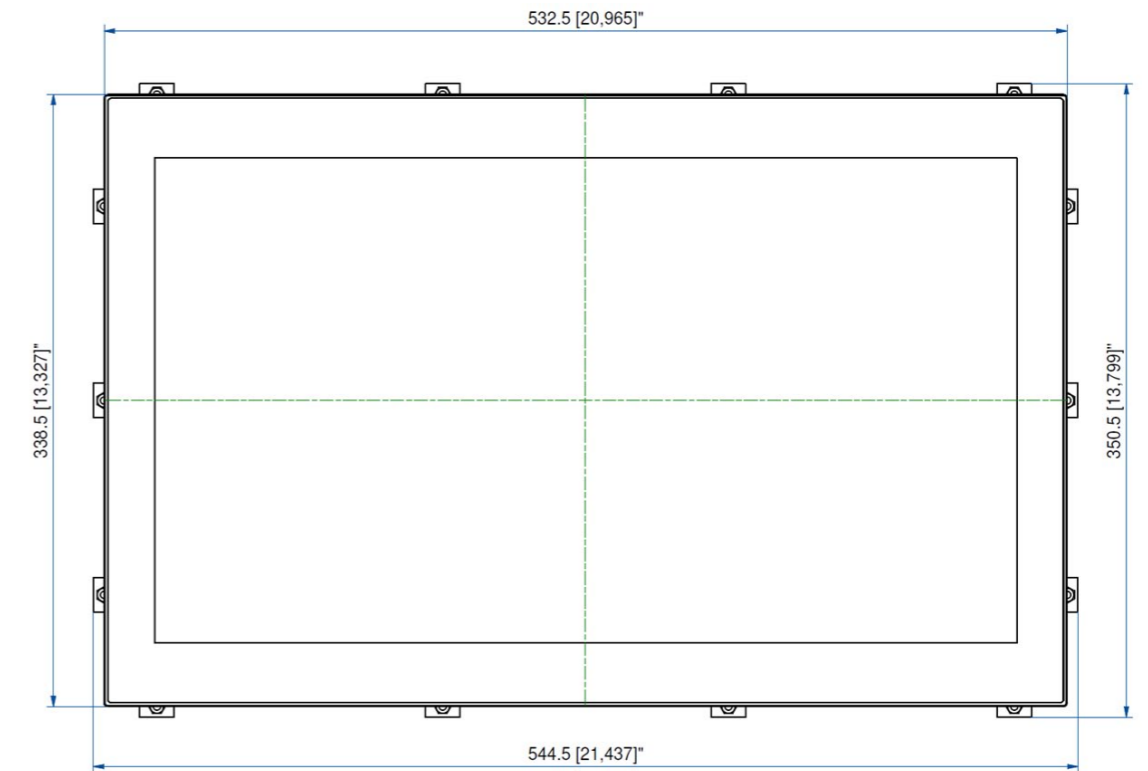
JI-FPC2022	
Display	21.5" TFT widescreen display
Resolution	1920 x 1080
Format	16:9
Contrast	3000:1
Brightness (display)	300 cd/m ²
Backlight	LED, lifetime > 50.000 h
Touch screen	Glass projected capacitive touch (PCAP)
Processor	Intel® Core™ i5 ULT Core 7300U "Kaby Lake"
RAM	8 GB
Interfaces	4x USB 3.0 2x GBE LAN (10/100/1000 Mbit) 1x Displayport 1x HDMI
Drives	1x M.2 SSD 128 GByte
Cooling	Passive (fanless)
Supply voltage	12 ... 30 VDC
Power consumption	5 A max.
Weight	10.5 kg
Dimensions (W x H x D)	533 x 339 x 74 mm
Cut-out dimensions	522.5 x 328 mm
Color (front)	Black gray RAL 7021
Mounting	Front-panel mounting
EMC	EN55022 class B
Approvals	CE Low Voltage Directive 2006/95/EC EMC Directive 2004/108/EC RoHS II Directive E2011/65/EU
Protection class	IP65 front side, IP20 rear side
Operating temperature	0 °C to +50 °C
Humidity	10 % to 90 %, @39 °C, non-condensing
Supported operating systems	Windows 10, Linux embedded Standard delivery is: Windows 10 IoT Enterprise 2019 LTSC Embedded OEM License Key (ePKEA), Value (MUU-00005)
RoHS compliant	Yes (E2011/65/EU)

Further details and order information are available on request. Specifications are subject to change without notice. Errors and omissions excepted.

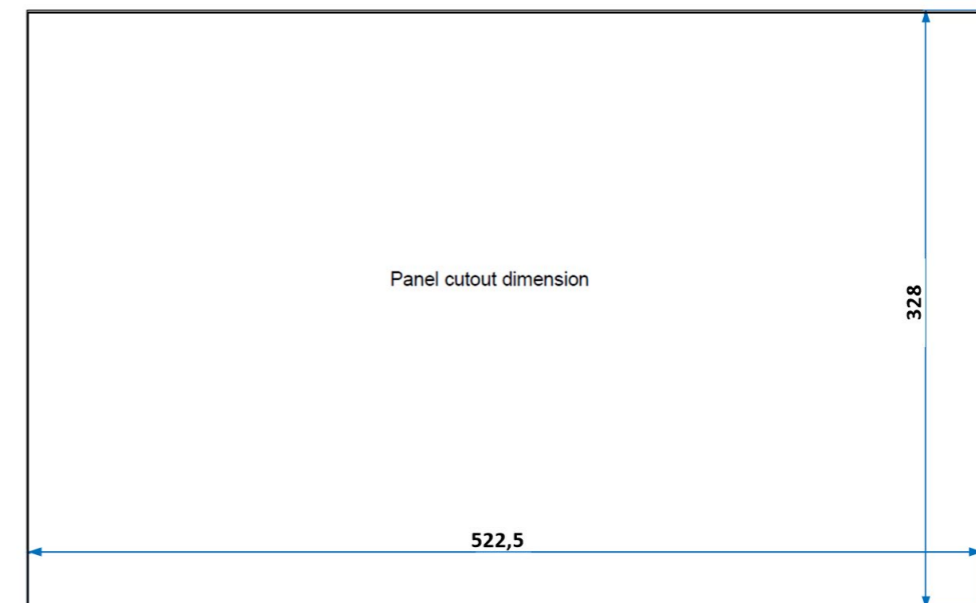
Ordering information

10001843 - JI-FPC2022-PCT-E1-L7-B10-DE - FlatPanel-PC; 21,5"; 8 GB RAM; i5, 128GB SSD; Windows 10

Dimensional drawing | Front

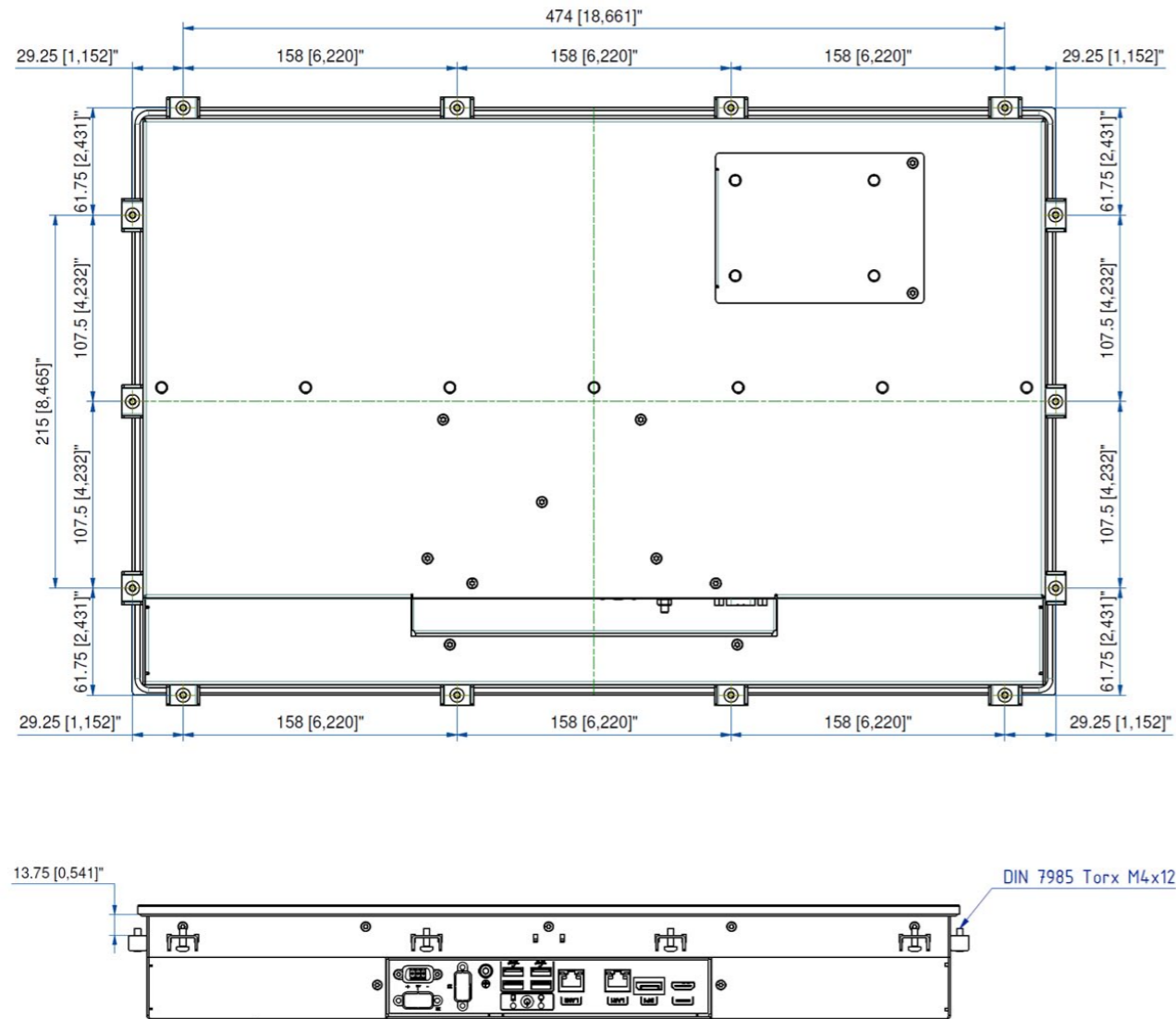


Cutout dimensions | Front installation

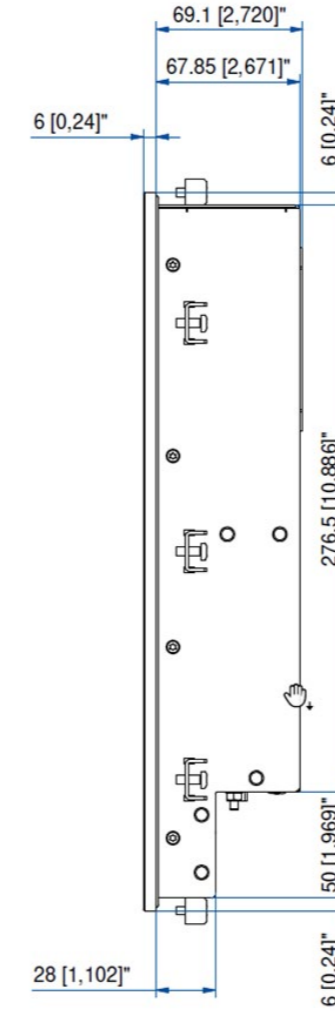


JI-FPC2022

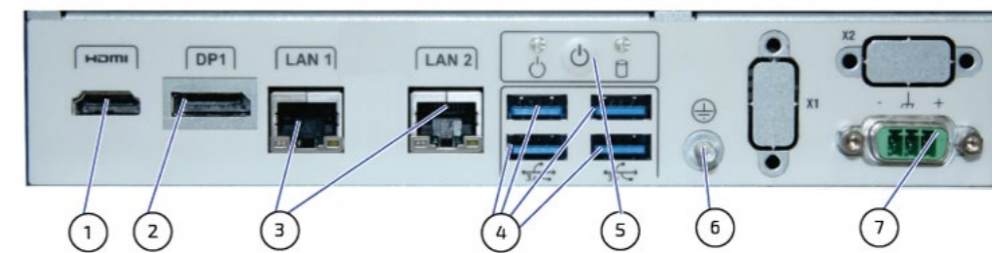
Dimensional drawing | Rear view



Dimensional drawing | Side view



Interfaces



- 1: HDMI
- 2: Displayport
- 3: LAN 1 + 2
- 4: USB 3.0
- 5: ON/OFF + LEDs
- 6: Grounding bolt
- 7: Power supply

