

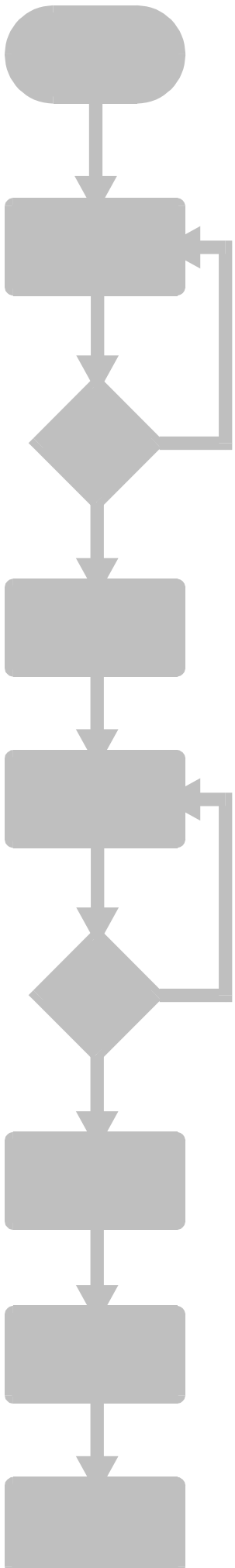


**Technische Information
Versions-Update**

21.09.1998

**Delta Profibus - Modul,
Version 1.11**

Neues über das Delta Profibus-Modul



Version 1.11

Die Version 1.11 kann ab sofort 1024 Eingänge und 1024 Ausgänge übertragen. Dazu können die Register xx102 und xx103 (Anzahl Sende- bzw. Empfangsregister, 16 Bit) bis auf den Wert 64 erhöht werden.

Für die Adressierung werden jetzt neue Sende- bzw. Empfangsregister verwendet. Die Ein- und Ausgänge können nur bis 999 direkt adressiert werden.

Baudraten bis 12 Mbaud sind möglich.

Neue Sende- und Empfangsregister:

| Senderegister (Eingänge für Profibus-DP) | | Empfangsregister (Ausgänge für Profibus-DP) | |
|---|----------------|--|----------------|
| Registernummer | Eingänge | Registernummer | Ausgänge |
| 11m300 | 1m001 .. 1m016 | 11m400 | 1m001 .. 1m016 |
| 11m301 | 1m017 .. 1m032 | 11m401 | 1m017 .. 1m032 |
| 11m302 | 1m033 .. 1m048 | 11m402 | 1m033 .. 1m048 |
| 11m303 | 1m049 .. 1m064 | 11m403 | 1m049 .. 1m064 |
| 11m304 | 1m065 .. 1m080 | 11m404 | 1m065 .. 1m080 |
| 11m305 | 1m081 .. 1m096 | 11m405 | 1m081 .. 1m096 |
| 11m306 | 1m097 .. 1m112 | 11m406 | 1m097 .. 1m112 |
| 11m307 | 1m113 .. 1m128 | 11m407 | 1m113 .. 1m128 |
| 11m308 | 1m129 .. 1m144 | 11m408 | 1m129 .. 1m144 |
| 11m309 | 1m145 .. 1m160 | 11m409 | 1m145 .. 1m160 |
| 11m310 | 1m161 .. 1m176 | 11m410 | 1m161 .. 1m176 |
| 11m311 | 1m177 .. 1m192 | 11m411 | 1m177 .. 1m192 |
| 11m312 | 1m193 .. 1m208 | 11m412 | 1m193 .. 1m208 |
| 11m313 | 1m209 .. 1m224 | 11m413 | 1m209 .. 1m224 |
| 11m314 | 1m225 .. 1m240 | 11m414 | 1m225 .. 1m240 |
| 11m315 | 1m241 .. 1m256 | 11m415 | 1m241 .. 1m256 |
| 11m316 | 1m257 .. 1m272 | 11m416 | 1m257 .. 1m272 |
| 11m317 | 1m273 .. 1m288 | 11m417 | 1m273 .. 1m288 |
| 11m318 | 1m289 .. 1m304 | 11m418 | 1m289 .. 1m304 |
| 11m319 | 1m305 .. 1m320 | 11m419 | 1m305 .. 1m320 |
| 11m320 | 1m321 .. 1m336 | 11m420 | 1m321 .. 1m336 |

| Senderegister (Eingänge für Profibus-DP) | | Empfangsregister (Ausgänge für Profibus-DP) | |
|---|----------------|--|----------------|
| Registernummer | Eingänge | Registernummer | Ausgänge |
| 11m321 | 1m337 .. 1m352 | 11m421 | 1m337 .. 1m352 |
| 11m322 | 1m353 .. 1m368 | 11m422 | 1m353 .. 1m368 |
| 11m323 | 1m369 .. 1m384 | 11m423 | 1m369 .. 1m384 |
| 11m324 | 1m385 .. 1m400 | 11m424 | 1m385 .. 1m400 |
| 11m325 | 1m401 .. 1m416 | 11m425 | 1m401 .. 1m416 |
| 11m326 | 1m417 .. 1m432 | 11m426 | 1m417 .. 1m432 |
| 11m327 | 1m433 .. 1m448 | 11m427 | 1m433 .. 1m448 |
| 11m328 | 1m449 .. 1m464 | 11m428 | 1m449 .. 1m464 |
| 11m329 | 1m465 .. 1m480 | 11m429 | 1m465 .. 1m480 |
| 11m330 | 1m481 .. 1m496 | 11m430 | 1m481 .. 1m496 |
| 11m331 | 1m497 .. 1m512 | 11m431 | 1m497 .. 1m512 |
| 11m332 | 1m513 .. 1m528 | 11m432 | 1m513 .. 1m528 |
| 11m333 | 1m529 .. 1m544 | 11m433 | 1m529 .. 1m544 |
| 11m334 | 1m545 .. 1m560 | 11m434 | 1m545 .. 1m560 |
| 11m335 | 1m561 .. 1m576 | 11m435 | 1m561 .. 1m576 |
| 11m336 | 1m577 .. 1m592 | 11m436 | 1m577 .. 1m592 |
| 11m337 | 1m593 .. 1m608 | 11m437 | 1m593 .. 1m608 |
| 11m338 | 1m609 .. 1m624 | 11m438 | 1m609 .. 1m624 |
| 11m339 | 1m625 .. 1m640 | 11m439 | 1m625 .. 1m640 |
| 11m340 | 1m641 .. 1m656 | 11m440 | 1m641 .. 1m656 |
| 11m341 | 1m657 .. 1m672 | 11m441 | 1m657 .. 1m672 |
| 11m342 | 1m673 .. 1m688 | 11m442 | 1m673 .. 1m688 |
| 11m343 | 1m689 .. 1m704 | 11m443 | 1m689 .. 1m704 |
| 11m344 | 1m705 .. 1m720 | 11m444 | 1m705 .. 1m720 |
| 11m345 | 1m721 .. 1m736 | 11m445 | 1m721 .. 1m736 |
| 11m346 | 1m737 .. 1m752 | 11m446 | 1m737 .. 1m752 |
| 11m347 | 1m753 .. 1m768 | 11m447 | 1m753 .. 1m768 |
| 11m348 | 1m769 .. 1m784 | 11m448 | 1m769 .. 1m784 |
| 11m349 | 1m785 .. 1m800 | 11m449 | 1m785 .. 1m800 |
| 11m350 | 1m801 .. 1m816 | 11m450 | 1m801 .. 1m816 |
| 11m351 | 1m817 .. 1m832 | 11m451 | 1m817 .. 1m832 |
| 11m352 | 1m833 .. 1m848 | 11m452 | 1m833 .. 1m848 |
| 11m353 | 1m849 .. 1m864 | 11m453 | 1m849 .. 1m864 |
| 11m354 | 1m865 .. 1m880 | 11m454 | 1m865 .. 1m880 |
| 11m355 | 1m881 .. 1m896 | 11m455 | 1m881 .. 1m896 |
| 11m356 | 1m897 .. 1m912 | 11m456 | 1m897 .. 1m912 |
| 11m357 | 1m913 .. 1m928 | 11m457 | 1m913 .. 1m928 |
| 11m358 | 1m929 .. 1m944 | 11m458 | 1m929 .. 1m944 |
| 11m359 | 1m945 .. 1m960 | 11m459 | 1m945 .. 1m960 |
| 11m360 | 1m961 .. 1m976 | 11m460 | 1m961 .. 1m976 |
| 11m361 | 1m977 .. 1m992 | 11m461 | 1m977 .. 1m992 |
| 11m362 | 1m993 .. 1m999 | 11m462 | 1m993 .. 1m999 |
| 11m363 | 1009 .. 1024 | 11m463 | 1009 .. 1024 |