

JetViewSoft

Creating and visualizing HMI screens

We automate your success.

Create visualizations - quickly and easily

The software tool JetViewSoft lets you easily visualize processes and design individual screens for HMIs. The proven object-oriented approach allows you to easily and efficiently complete even complex visualization tasks without previous experience. The user-friendly editor and a pool of predefined objects actively help you create screens in no time at all.

Product features

- Supports scalable vector graphics and SVG import
- Features gesture control for modern visualizations
- Efficient design process thanks to object-oriented structure
- Database with predefined objects and preview feature
- Supports creation of multilingual screens and import/export of language resources
- Alarm handling and trend graph
- STX as scripting language lets you add new functions
- Terminal Wizard and simple download to HMIs



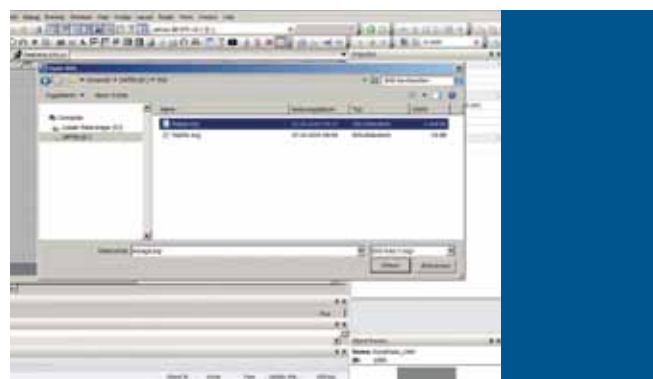
Full scalability thanks to vector graphics technology

The vector graphics technology of JetViewSoft allows for complete and lossless scalability of all objects (except for bitmap graphics). Thus, projects or project parts that are designed for a specific resolution of the target device can be used on displays with a different resolution without any loss.



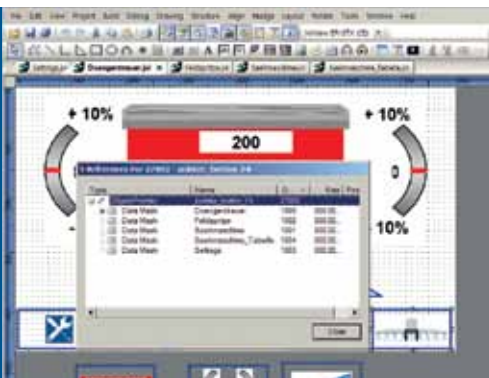
SVG import

JetViewSoft lets you directly import SVG files from graphics or CAD tools into a visualization application. Cumbersome conversion of CAD drawings into bitmap format is therefore a thing of the past.



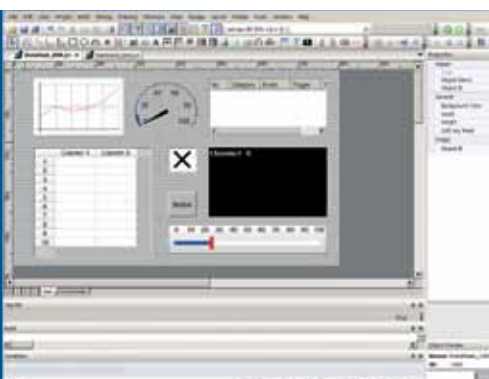
The modern way of creating HMI screens

All important functions such as alarm handling, trending and libraries are available for the creation of sophisticated visualizations. The easy-to-use editor with its object-oriented approach helps you implement large projects in an easy and efficient way.



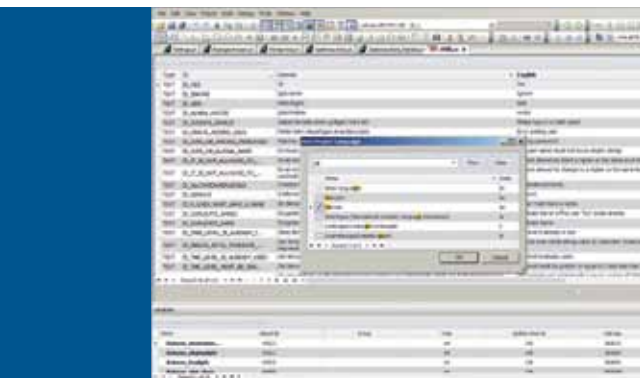
Object-oriented and efficient

The object-oriented approach of JetViewSoft makes creating screens a lot easier. Objects such as buttons need to be defined only once before they can be used as often as they are needed. Making changes to an object property automatically takes effect wherever this object has been applied. Various visualization objects can be dynamically displayed in the control program during runtime by means of pointers.



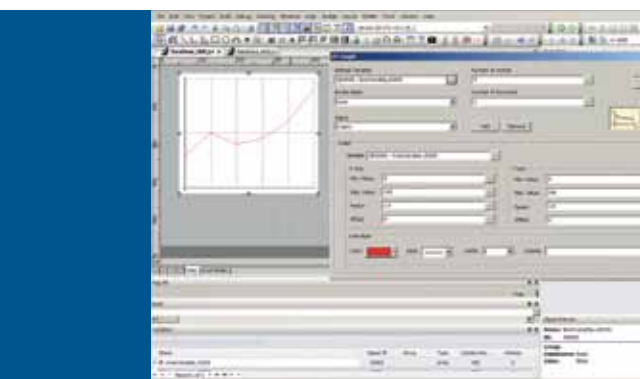
Configuring objects rather than programming

In JetViewSoft, visualizations can be configured using existing graphic objects. To this end, predefined objects, such as sliders, meters, buttons, lines, circles, ellipses, list boxes, check boxes, symbols, XY graphs, image and video objects are simply arranged by drag and drop in the development environment. These elements can be arranged one upon the other or side by side. They can also be combined to form groups. All elements can be stored in a separate structured object library. This lets you easily organize even complex object groups. Handling of such groups is intuitive by drag and drop. The intelligent tool tip feature provides further useful information.



Editing and maintaining several languages in one pool

In JetViewSoft, the selected language and optional image fonts are loaded from a central language management pool during runtime. This allows for simple import or export of language resources as CSV files for further editing in MS Excel, for instance. Translation, maintenance and handling of several languages can be carried out quickly and easily.



A complete overview

Keep an eye upon any presently running process by means of the alarm handler and the trendgraph feature. All kinds of control data, such as production processes, quantities, measured values and trends can be recorded and clearly displayed.



Test JetViewSoft today
Convince yourself. For further information and the demo version, please visit www.jetter.de.



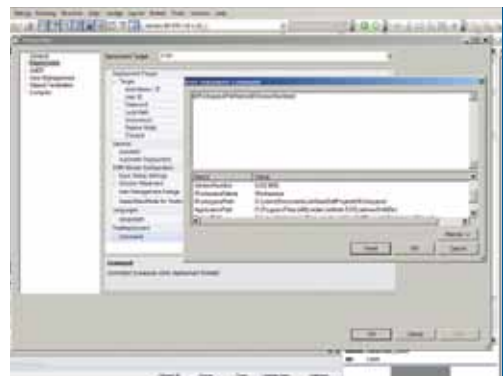
Gesture control included

JetViewSoft fully supports state-of-the-art operating philosophies. This is especially true for intuitive gestures which can be used on terminals with multi-touch support. Swipe, pan, and pinch gestures are supported by the operating systems Windows® 7 and Windows® Embedded Compact 2013 and are available as macro functions in the visualization.



Simple download to HMIs

For transferring visualization objects JetViewSoft features a wizard displaying all available types of devices for selection. The Restart command triggers a Compile & Deploy process which can be used to download the visualization project to any terminal that can be reached via IP. Special configurations, that are to be implemented following the download, can be realized by means of batch files.



Jetter AG
Graeterstrasse 2
71642 Ludwigsburg | Germany

Phone +49 7141 2550-0
Fax +49 7141 2550-425
info@jetter.de
www.jetter.de