

# Jet Web



**Servo Amplifier JetMove 200**  
incredibly versatile – unbelievably simple



# → Time-Saving!

## → One System and One Software - the Do-Alls

The JetMove 200 servo amplifiers save you time, as they differ considerably from comparable conventional devices. They can be seamlessly integrated into the control system. This way, you can easily determine and store motor data, as well as query statuses for diagnostics. Even after exchanging a servo amplifier, these data are still at your disposal! This way, commissioning and servicing times are drastically reduced!

The features at a single glance:

- Optimum interaction with the control system
- Easy operation and quick commissioning
- Integrated technological and special functions
- Ability to control various motor types

## → Versatile

The JetMove 200 servo amplifiers cover the entire voltage range (1x230 VAC / 3x400 VAC) up to 25 A. This allows for any motor variant to be supported. This way, the JetMove 200 servo amplifiers can be applied extremely well in all areas of automation.

The following motor types can be driven:

- Synchronous servo motors
- Asynchronous machines (frequency inverters) with or without feedback
- Stepper motors
- Direct drives
- Torque motors

## → An Enormous Range of Functions

The JetMove 200 servo amplifiers feature an enormous number of axis, technological and special functions being integrated into the device by default. This way, you are able to carry out even complex applications both quickly and easily!

Let us present you a small selection of these functions:

- Synchronizing of position and velocity
- Table function / cam disc
- Dynamically changeable tables
- Torque, respectively force control
- Flying saw, cross cutter
- Print-mark correction
- Electronic gearing
- Winding function



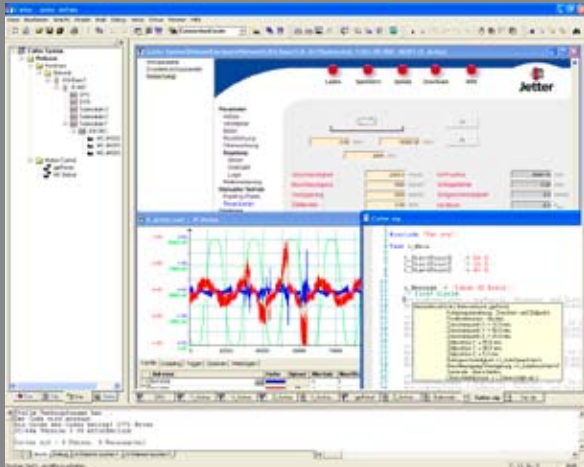
Our software tool JetSym supports you in all phases of your project, that is, from programming to commissioning.

## → JetSym - the Good Genius

JetSym is the powerful software tool for programming and commissioning the JetMove series. JetSym will fulfil your every wish. For this tool is not only a result of many years of development, but also of a 30-year-old experience in automation.

The features of JetSym look quite respectable: the process-oriented language JetSym STX, multitasking with 100 parallel programs, path control instructions, object-oriented programming and much more. The best thing for you to do would be to check out our new JX3 starter kit right away. This way, you will experience hands-on the obvious ease of programming by JetSym STX.

For further information, please contact us directly or turn to [www.jetter.de/starterkit](http://www.jetter.de/starterkit) on the Internet.





## → Technical Data of the JetMove 200 Servo Amplifier Series

	JM-203B	JM-206B	JM-204	JM-208	JM-215B	JM-225	JM-D203
Type of connection	1 / 3 x 230 VAC	1 / 3 x 230 VAC	3 x 400 VAC	3 x 400 VAC	3 x 400 VAC	3 x 400 VAC	1 x 230 VAC
Rated current	3 A	6 A	4 A	8 A	15 A	25 A	2 x 3 A
Peak current	6 A	12 A	8 A	16 A	30 A	50 A	2 x 6 A
Continuous output	0.5 kW	1.5 kW	2 kW	4.5 kW	5.5 kW	7 kW	2 x 0.5 kW
Ethernet interface	as option	as option	as option	as option	as option	as option	–
Safe Standstill	as option	–	as option	as option	as option	as option	as option
Dimensions	55	70	72	72	105	105	87
H x W x D (mm)	216	264	310	310	310	310	310
	220	260	280	280	280	280	203

### Additional Options:

- 1 counter input (EnDat 2.2, incremental, SSI)
- 1 analog input (12 bit, 0 - 10 V)
- 1 Ethernet interface (10/100 Mbit)

As option, type JM-D203 is available with an integrated controller.

All models of the JetMove 200 series have got the following features by default:

- JX2 system bus interface
- Integrated line filter
- Digital output for brake control (0.5 A, 24 VDC)



Jetter AG, Gräterstraße 2, D-71642 Ludwigsburg, Germany  
 Phone: +49 7141 2550-433, Fax: +49 7141 2550-484, [www.jetter.de](http://www.jetter.de), E-mail: [sales@jetter.de](mailto:sales@jetter.de)

Jetter Schweiz AG, Switzerland, Phone: +41 71 91879-50, [www.jetterag.ch](http://www.jetterag.ch), E-mail: [info@jetterag.ch](mailto:info@jetterag.ch)  
 Jetter Asia Pte Ltd., Singapore, Phone: +65 6483 8200, [www.jetter.com.sg](http://www.jetter.com.sg), E-mail: [sales@jetter.com.sg](mailto:sales@jetter.com.sg)  
 Jetter Automation Inc., USA, Phone: +1 440 8380-860, [www.jetterus.com](http://www.jetterus.com), E-mail: [bschulze@jetterus.com](mailto:bschulze@jetterus.com)