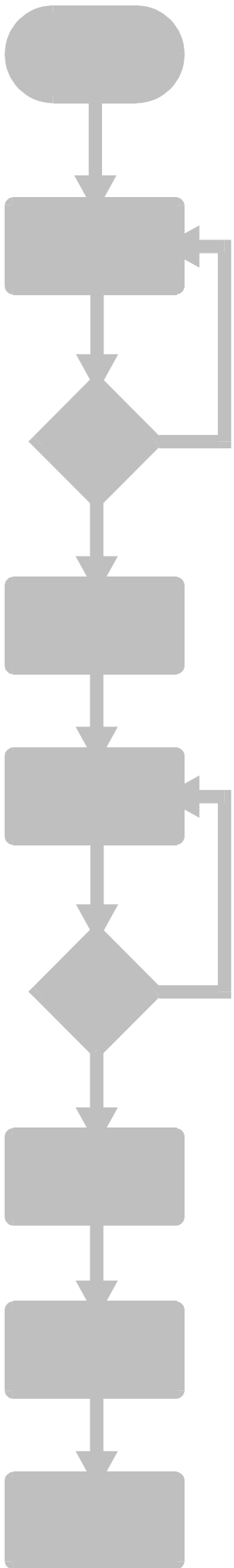




Technical Information
Version Update

21 September 1998

**DELTA Profibus - Module,
Version 1.11**



News on the DELTA Profibus-Module Version 1.11

Version 1.11 can transfer up to 1024 inputs and 1024 outputs. For this the register xx102 and xx103 (number of transfer or receive register, 16 bit) can be increased to value 64.

There exists new register for addressing the 64 transfer and receive register.

The inputs and outputs can only be addressed up to 999.

Baud rates up to 12 Mbaud are possible.

New registers for transfer and reception:

transfer register (inputs for the profibus-DP)		receive register (outputs for the profibus-DP)	
register number	inputs	register number	outputs
11m300	1m001 .. 1m016	11m400	1m001 .. 1m016
11m301	1m017 .. 1m032	11m401	1m017 .. 1m032
11m302	1m033 .. 1m048	11m402	1m033 .. 1m048
11m303	1m049 .. 1m064	11m403	1m049 .. 1m064
11m304	1m065 .. 1m080	11m404	1m065 .. 1m080
11m305	1m081 .. 1m096	11m405	1m081 .. 1m096
11m306	1m097 .. 1m112	11m406	1m097 .. 1m112
11m307	1m113 .. 1m128	11m407	1m113 .. 1m128
11m308	1m129 .. 1m144	11m408	1m129 .. 1m144
11m309	1m145 .. 1m160	11m409	1m145 .. 1m160
11m310	1m161 .. 1m176	11m410	1m161 .. 1m176
11m311	1m177 .. 1m192	11m411	1m177 .. 1m192
11m312	1m193 .. 1m208	11m412	1m193 .. 1m208
11m313	1m209 .. 1m224	11m413	1m209 .. 1m224
11m314	1m225 .. 1m240	11m414	1m225 .. 1m240
11m315	1m241 .. 1m256	11m415	1m241 .. 1m256
11m316	1m257 .. 1m272	11m416	1m257 .. 1m272
11m317	1m273 .. 1m288	11m417	1m273 .. 1m288
11m318	1m289 .. 1m304	11m418	1m289 .. 1m304
11m319	1m305 .. 1m320	11m419	1m305 .. 1m320
11m320	1m321 .. 1m336	11m420	1m321 .. 1m336

transfer register (inputs for the profibus-DP)		receive register (outputs for the profibus-DP)	
register number	inputs	register number	outputs
11m321	1m337 .. 1m352	11m421	1m337 .. 1m352
11m322	1m353 .. 1m368	11m422	1m353 .. 1m368
11m323	1m369 .. 1m384	11m423	1m369 .. 1m384
11m324	1m385 .. 1m400	11m424	1m385 .. 1m400
11m325	1m401 .. 1m416	11m425	1m401 .. 1m416
11m326	1m417 .. 1m432	11m426	1m417 .. 1m432
11m327	1m433 .. 1m448	11m427	1m433 .. 1m448
11m328	1m449 .. 1m464	11m428	1m449 .. 1m464
11m329	1m465 .. 1m480	11m429	1m465 .. 1m480
11m330	1m481 .. 1m496	11m430	1m481 .. 1m496
11m331	1m497 .. 1m512	11m431	1m497 .. 1m512
11m332	1m513 .. 1m528	11m432	1m513 .. 1m528
11m333	1m529 .. 1m544	11m433	1m529 .. 1m544
11m334	1m545 .. 1m560	11m434	1m545 .. 1m560
11m335	1m561 .. 1m576	11m435	1m561 .. 1m576
11m336	1m577 .. 1m592	11m436	1m577 .. 1m592
11m337	1m593 .. 1m608	11m437	1m593 .. 1m608
11m338	1m609 .. 1m624	11m438	1m609 .. 1m624
11m339	1m625 .. 1m640	11m439	1m625 .. 1m640
11m340	1m641 .. 1m656	11m440	1m641 .. 1m656
11m341	1m657 .. 1m672	11m441	1m657 .. 1m672
11m342	1m673 .. 1m688	11m442	1m673 .. 1m688
11m343	1m689 .. 1m704	11m443	1m689 .. 1m704
11m344	1m705 .. 1m720	11m444	1m705 .. 1m720
11m345	1m721 .. 1m736	11m445	1m721 .. 1m736
11m346	1m737 .. 1m752	11m446	1m737 .. 1m752
11m347	1m753 .. 1m768	11m447	1m753 .. 1m768
11m348	1m769 .. 1m784	11m448	1m769 .. 1m784
11m349	1m785 .. 1m800	11m449	1m785 .. 1m800
11m350	1m801 .. 1m816	11m450	1m801 .. 1m816
11m351	1m817 .. 1m832	11m451	1m817 .. 1m832
11m352	1m833 .. 1m848	11m452	1m833 .. 1m848
11m353	1m849 .. 1m864	11m453	1m849 .. 1m864
11m354	1m865 .. 1m880	11m454	1m865 .. 1m880
11m355	1m881 .. 1m896	11m455	1m881 .. 1m896
11m356	1m897 .. 1m912	11m456	1m897 .. 1m912
11m357	1m913 .. 1m928	11m457	1m913 .. 1m928
11m358	1m929 .. 1m944	11m458	1m929 .. 1m944
11m359	1m945 .. 1m960	11m459	1m945 .. 1m960
11m360	1m961 .. 1m976	11m460	1m961 .. 1m976
11m361	1m977 .. 1m992	11m461	1m977 .. 1m992
11m362	1m993 .. 1m999	11m462	1m993 .. 1m999
11m363	1009 .. 1024	11m463	1009 .. 1024