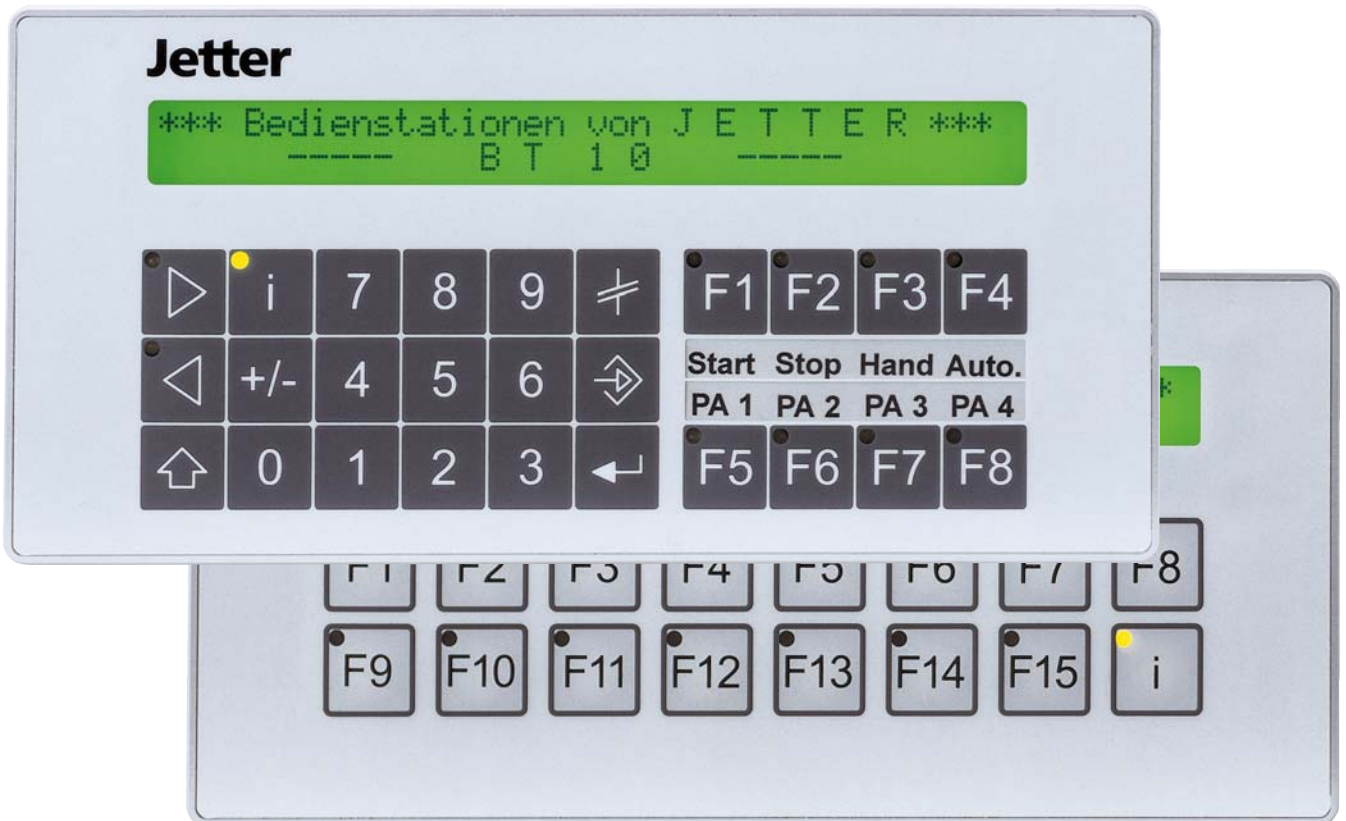


BT 10 (12)



- Alphanumerisches LCD-Display
- 2 Zeilen zu je 40 Zeichen
- Hinterleuchtung
- 8 Funktionstasten mit LED und Ziffernblock
(BT12: 16 Funktionstasten mit LED ohne Ziffernblock)
- Kurzhubtasten
- Netzausfallsicherer Flash-Speicher
- Integrierte Sprachumschaltung
- Echtzeituhr optional
- Rezepturspeicher optional

- *Alphanumeric LCD display*
- *2 lines with 40 characters each*
- *Background lighting*
- *8 function keys with LED and numeric keypad*
(BT12: 16 function keys with LED without numeric keypad)
- *Short-stroke keys*
- *Flash memory with power failure protection*
- *Integrated language selection*
- *Optional realtime clock*
- *Optional recipe archive*

Folgende Kommunikationsprotokolle werden von Haus aus unterstützt:

3964 R, ABB, AB-DF1, AB-DH485, AEG-KS-Funktionen, AEG-Modbus, Bosch BUEP19, Bosch BUEP19E, Crouzet, Jetter, Mitsubishi, Modbus, Moeller Sucom A, Omron, SEW-Eurodrive, Siemens L1, Siemens MPI, Siemens PPI, (weitere auf Anfrage)

The following communication protocols are inherently supported:

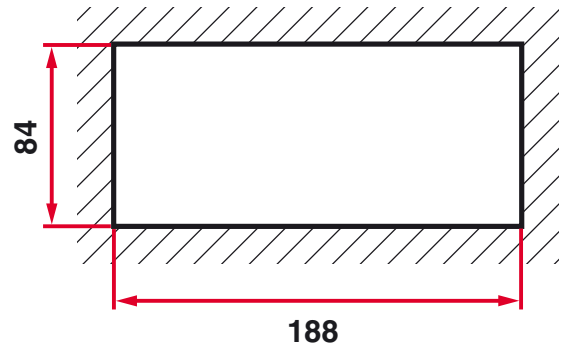
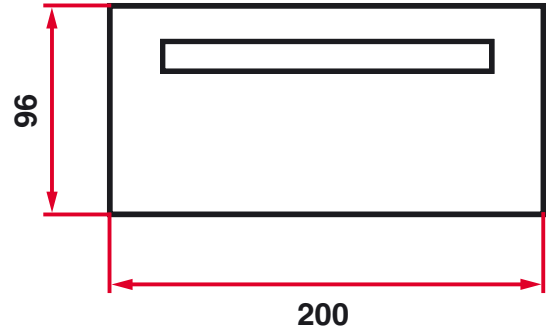
3964 R, ABB, AB-DF1, AB-DH485, AEG-KS functions, AEG-Modbus, Bosch BUEP19, Bosch BUEP19E, Crouzet, Jetter, Mitsubishi, Modbus, Moeller Sucom A, Omron, SEW-Eurodrive, Siemens L1, Siemens MPI, Siemens PPI, (additional protocols on request)

Kommunikationsprotokolle *Communication Protocols*

Technische Daten *Technical Data*

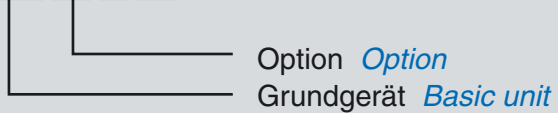
| | | | |
|---------------------------|--------------------------------------|------------------------------|--|
| Display | LCD Punktmatrix | Type of Display | <i>LCD dot matrix</i> |
| Zeilenzahl | 2 | Number of Lines | <i>2</i> |
| Zeichen/Zeile | 40 | Characters / Line | <i>40</i> |
| Zeichenhöhe | 5 mm | Character Height | <i>5 mm</i> |
| Hinterleuchtung | LED | Background Lighting | <i>LED</i> |
| Funktionstasten | 8 (16) | Function Keys | <i>8 (16)</i> |
| Speicher | 64 KB Flash | Memory | <i>64 KB Flash</i> |
| Schnittstelle | COM1 (RS232) COM2 (RS232/422/485) | Interface | <i>COM1 (RS232) COM2 (RS232/422/485)</i> |
| Versorgung | 24 V DC | Power Supply | <i>24 V DC</i> |
| Stromaufnahme | 150 mA | Current Consumption | <i>150 mA</i> |
| Umgebungstemp. | 0 ... 45 °C | Ambient Temperature | <i>0 ... 45 °C</i> |
| Maße (BxHxT) | 200 x 96 x 45 mm | Dimensions (WxHxD) | <i>200 x 96 x 45 mm</i> |
| Schutzart | vorne IP 65 | Protection Degree | <i>Front side IP 65</i> |
| Verschmutzungsgrad | II (nach DIN EN 61131-2) | Pollution Degree | <i>II (acc. to DIN EN 61131-2)</i> |
| Schwingfestigkeit | DIN EN 61131-2 | Immunity to Vibration | <i>DIN EN 61131-2</i> |
| Schutzklasse | III (nach DIN EN 50178) | Protection Class | <i>III (acc. to DIN EN 50178)</i> |
| ESD | DIN EN 61131-2 | ESD | <i>DIN EN 61131-2</i> |

Maßzeichnungen (mm)
Dimensional Drawing (mm)



Bestellangaben *Ordering Information*

TXXX XX 01 22



Optionen *Options:*

00 = ohne Option *Without options*

01 = Rezepturspeicher *Recipe archive*

03 = Uhr *Clock*

05 = Rezepturspeicher + Uhr *Recipe archive + clock*

BT10 Version 1 (RS232 + TTY Interface)
BT10 Version 2 (RS232 Interface)
BT10 Version 3 (RS485 + RS422 Interface)
BT10 Version 5 (RS232 + active TTY Interface)

T010xx0122
 T011xx0122
 T012xx0122
 T017xx0122

BT12 Version 1 (RS232 + TTY Interface)
BT12 Version 2 (RS232 Interface)
BT12 Version 3 (RS485 + RS422 Interface)
BT12 Version 5 (RS232 + active TTY Interface)

T013xx0122
 T014xx0122
 T015xx0122
 T018xx0122



Jetter AG - Geschäftsbereich Ebelt
Jahnstraße 7, D-73760 Ostfildern
Telefon *Phone*: +49 (7158) 64069
Telefax *Fax*: +49 (7158) 65862
Internet: <http://www.jetter.de>
E-Mail: info-ebelt@jetter.de

Adresse
Address